



FINCH COTTAGE COVID-19 GUIDELINES



Following social distancing guidelines

When you are in a common area or shared space, please maintain distance from anyone who's not part of your reservation at all times, as recommended by the relevant regulatory authorities, e.g. 6 feet (2m) and at least 3 feet (1m) in smaller areas, according to the UK guidelines.

If you become unwell during your stay with us, please contact NHS on 111 or call 999 if you need urgent assistance.

Wear a mask

Face coverings are required to be worn in any shops, including food shops and supermarkets, but are not required in hospitality settings, including restaurants with table service, bars and pubs.

Please know that if you wish to wear a mask during your stay with us that is absolutely fine, and please let us know if you require us to wear one during any interaction we may have with you.

Wash your hands regularly

Be sure to wash your hands often, especially if you're in contact with people outside your reservation and are touching surfaces and utensils in our shared space or a common area.

- Wash your hands properly with soap and water for at least 20 seconds
- If soap and water are not readily available, use a hand sanitiser that contains at least 60% alcohol by covering your hands with it and rubbing your hands together until they feel dry.
- We have provided hand sanitiser in each guest room for your personal use. Please leave this bottle in the room when vacating so we can clean and re-fill for our next guests to use.

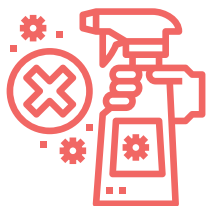
What to do if you test positive for COVID-19 during or after your stay

If you have recently tested positive for COVID-19 or have started to feel any COVID-19 symptoms and have recently stayed in a listing or interacted with your host, you should inform the relevant local authorities as well as your doctor and the host you stayed with.

FINCH COTTAGE COVID-19 GUEST CHECKLIST

(Our commitment to you)

1. Increased cleaning and disinfecting



We have increased our cleaning and disinfecting frequency throughout the house, paying attention to high-touch items such as light switches, handles, etc.

2. Single-use products



We have introduced single-use bathroom products so please feel free to take them with you when vacating the room or bin them if used.

3. Sanitiser stations



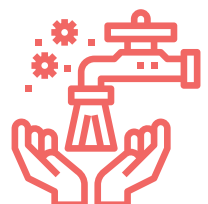
We have installed alcohol-based hand sanitiser dispensers in all our rooms for your personal use. Please feel free to use them but be kind enough to leave them in the room when you check out so we can clean and refill them for our next guests to use.

4. Bedroom cleaning



We are deep cleaning after every stay, including use of disinfectant spray on all touch points and all bedding & towels are freshly laundered before each guests' arrival.

5. Food area safety



We kindly request that you sanitise your hands before touching any of the breakfast items or the tea & coffee making facilities. We have introduced single-use items such as sugar and coffee sachets as much as possible, to cut back on multi-person handling.

6. Team PPE



We are happy to wear face masks during your visit, if you wish us to do so - just ask!